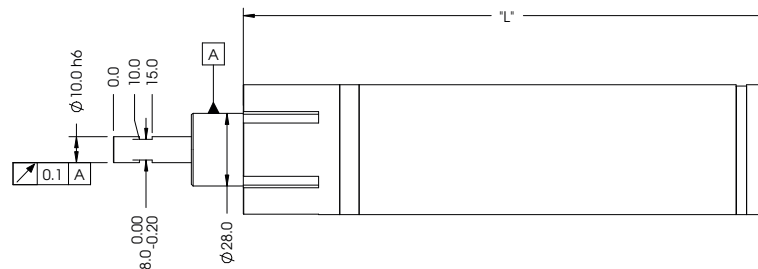
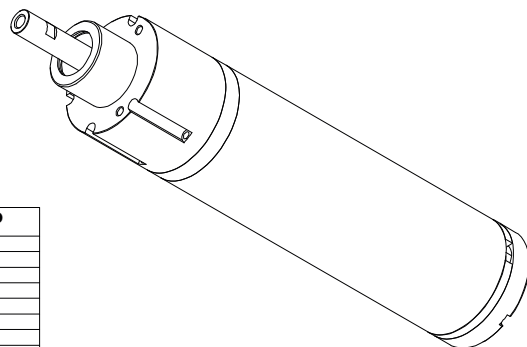
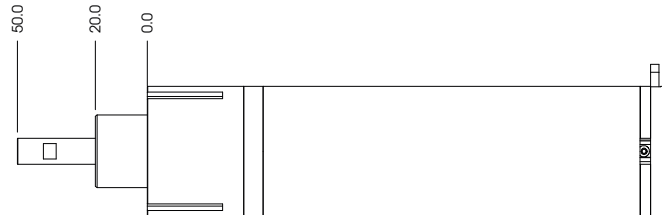
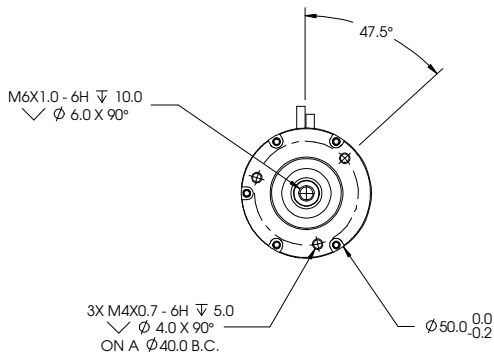


LINEAR SPECIFICATION:
 ENCODER RESOLUTION: 5, 1µm
 ENCODER REPEATABILITY: ±4 COUNT
 OPERATING TEMPERATURE: 0°C TO 65 °C

REVISIONS				
REV	ECR	DESCRIPTION	DATE	APPROVED
A		INITIAL RELEASE	2/24/2014	MAC
B		CORRECTED FORCE DATA	7/9/2014	MAC
C		ADD -5, -7	7/31/2014	MAC
D		ADD 025-7	6/15/2015	MAC
E		CHG 025-6	6/18/2015	MAC
F		NEW NUMBERING SYSTEM	2/29/2016	MAC
G		UPDATE	7/20/2017	MAC
H		UPDATED MASS AND LENGTH	10/02/2017	BJC



PIN No	DB-26P
1	(L) PH. A+
2	(L) PH. B+
3	(L) PH. Z+
4	NC
5	NC
6	I/O RTN
7	NC
8	NC
9	NC
10	(L) PH. A-
11	(L) PH. B-
12	(L) PH. Z-
13	NC
14	NC
15	NC
16	NC
17	NC
18	NC
19	+5 VDC
20	5V RTN
21	L. COIL +
22	L. COIL -
23	L. COIL +
24	L. COIL -
25	NC
26	NC

PIN No	DB-15P
1	PH. A+
2	PH. Z+
3	PH. B+
4	+5 Vdc
5	NC
6	NC
7	NC
8	NC
9	PH. A -
10	PH. Z -
11	PH. B -
12	5V RTN

POWER

PIN No	DETAIL
1	V RTN
2	+V
3	COIL +
4	COIL -

No	DETAILS	UNIT	CBL50-0XX-YY							
			CBL50-010-5X-1	CBL50-010-5X-2	CBL50-010-7X-1	CBL50-010-7X-2	CBL50-025-5X-1	CBL50-025-5X-2	CBL50-025-7X-1	CBL50-025-7X-2
1	LINEAR STROKE	mm	10	10	10	10	25	25	25	25
2	PEAK FORCE	N	33	49	40	100	23	40	40	70
3	FORCE CONSTANT	N/A	22	16	26	33	15	13	26	23
4	MAXIMUM CURRENT	A	1.5	3	1.5	3	1.5	3	1.5	3
5	COIL RESISTANCE	Ohm	15	8	29	15	15	8	29	15
6	MOVING MASS	Kg	0.14	0.21	0.14	0.21	0.15	0.24	0.15	0.24
7	TOTAL MASS	Kg	1.14	1.7	1.14	1.7	1.3	2.1	1.3	2.1
8	DIMENSION "L"	mm	123	166	123	166	138	203	138	203
9	COIL INDUCTANCE	mH	1.98							

UNLESS OTHERWISE SPECIFIED:
 ALL DIMENSIONS ARE IN MM
 BREAK EDGES AND REMOVE BURRS
 TOLERANCES
 X: ±0.5 X.X ±0.1
 XXX: ±0.3 ANGLE: ±1°
 CONCENTRICITY: ±0.025
 ROUNDNESS: ±0.025
 EDGE BREAKS: 0.2 MAX
 ALL DIMENSIONS AND TOLERANCES ARE FINAL.

MATERIAL:	NAME:	DATE:
FINISH:	DOWN BY:	MAC
MACHINE FINISH:	CHK BY:	TMV
INTERPRET PER:	ENG APP:	4/14/2014
ASME Y14.5-2009	MFG APP:	
THIRD ANGLE PROJECTION	QA APP:	

SMAC
 MOVING COIL ACTUATORS
 TITLE: CBL50-0XX-YY
 5807 VAN ALLEN WAY
 CARLSBAD CA, 92008
 (760) 929-7588

SIZE: B PART NO: CBL50-025-6 REV: H
 SCALE: 1:2 DO NOT SCALE SHEET: 1 / 1