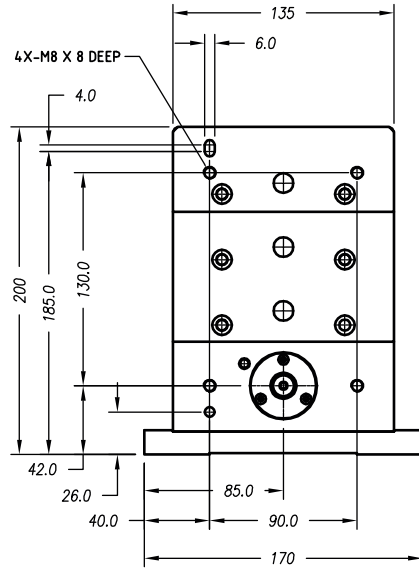


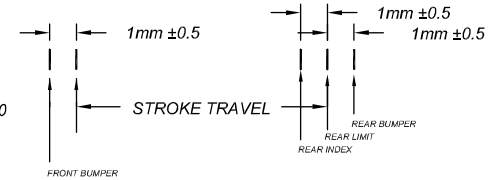
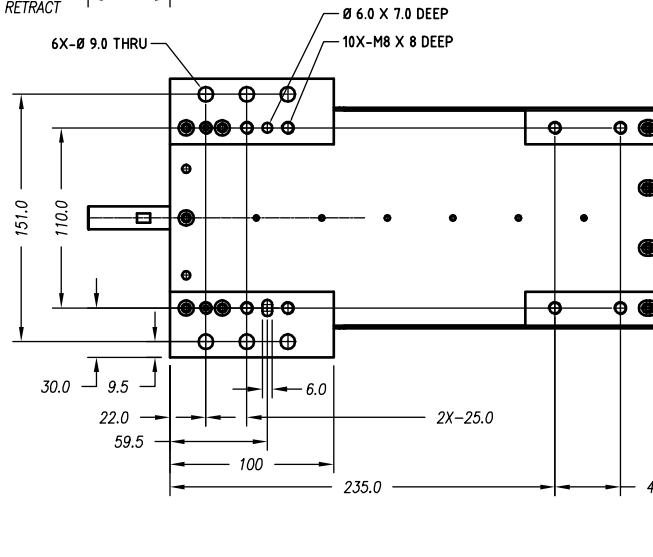
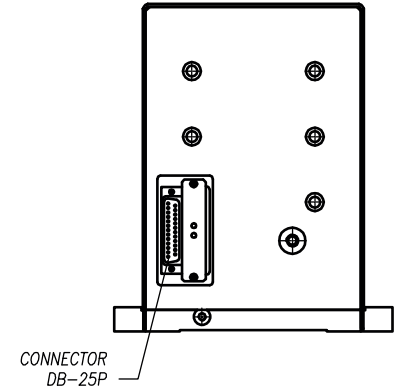
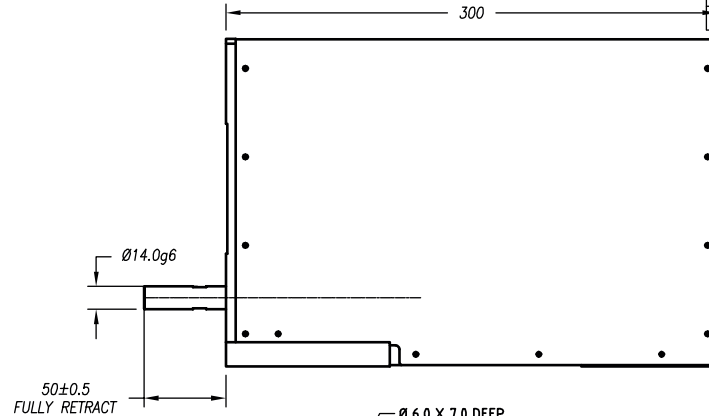
NOTES: (UNLESS OTHERWISE SPECIFIED)

- ALL DIMENSIONS ARE IN mm
- LINEAR SPECIFICATION:**
 LINEAR STROKE: 50 +1.0/-0 mm
 FORCE CONSTANT: 125 N/AMP (EST.)
 PEAK FORCE: 500 N @ 4 AMPS (48 VDC) (EST.)
 COIL DC RESISTANCE: 12 Ω 20°C (48 VDC)
 COIL INDUCTANCE: TBD mH @ 1 KHz
 ENCODER RESOLUTION: 5.0, 1.0, 0.5 μm
 ENCODER ACCURACY: ±4 counts
- MOVING MASS: 3.1 Kg (EST.)
- TOTAL MASS: 34 Kg (EST.)
- OPERATING TEMPERATURE: 0°C TO +50°C

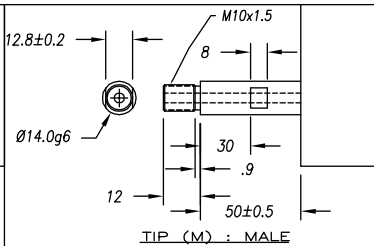
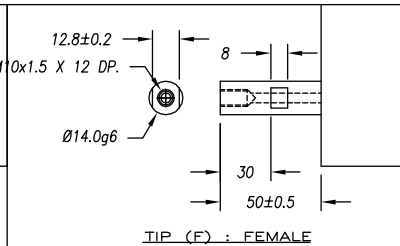
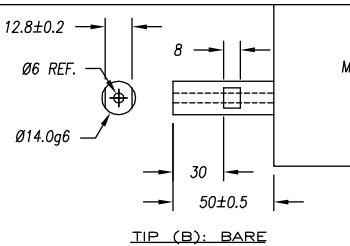


SIGNATURE NEEDED FOR ORDER APPROVAL
 SIGN _____ DATE _____
 APPROVAL NOT RECEIVED WITHIN
 48 HOURS MAY AFFECT DELIVERY

REVISIONS				
REV	DATE	ECN	DESCRIPTION	APP
A	4/26/06	3916	INITIAL RELEASE	TMV
B	9/6/06	4018	SEE ECN	LR
C	9/15/06	4022	SEE ECN	LR
D	10/1/13	5288	SEE ECN	KGS
E	1/19/16	5688	PART NUMBER CHANGE	SB



DB-25P CONNECTOR PIN OUT (AXIS 1=LINEAR)			
1	+5VDC	14	AXIS 1 ENCODER PHASE A+
2	+5V RETURN	15	NC
3	NC	16	AXIS 1 ENCODER PHASE B+
4	AXIS 1 ENCODER PHASE A-	17	NC
5	OVER HEAT	18	AXIS 1 ENCODER INDEX Z+
6	AXIS 1 LIMIT/OH RETURN	19	AXIS 1 MOTOR -
7	AXIS 1 MOTOR +	20	AXIS 1 MOTOR -
8	AXIS 1 MOTOR +	21	NC
9	AXIS 1 ENCODER PHASE B-	22	NC
10	NC	23	AXIS 1 ENCODER INDEX Z-
11	AXIS 1 LIMIT +	24	NC
12	AXIS 1 LIMIT -	25	NC
13	NC		



TOLERANCES ARE:

X.	± 0.50
X.X	± 0.1
X.XX	± 0.05
X.XXX	±
ANGULARITY	± 0.1°
CONCENTRIC	± 0.01
ROUNDNESS	± 0.05
EDGE BREAK	0.2 MAX
CHAMFER	0.2 MAX

FILE NAME:
LAL500-050-8_D

MATERIAL:
ALUMINUM
6061-T6

HEAT TREAT:
RC
DEEP

MACHINE FINISH:
3.2/

EXCEPT NOTED.

PROTECTIVE FINISH
ELECTROLESS NICKEL

SPEC. NUMBER:

SMAC

REF. NUMBER
LAL500-050-8

DESIGNED BY: TOAN VU	DATE: 4/26/06	CHECKED BY:	DATE:	CONTRACT: STD
DRAWN BY: KARL STOCKS	DATE: 10/1/13	APPROVED BY:	DATE:	
PART NAME: LAL500-050-7X-2		SHEET NUMBER: 1 of 1		
SCALE: NONE	DWG SIZE: B	PART NUMBER: LAL500-050-7X-2	REVISION: E	
DO NOT SCALE DWG				