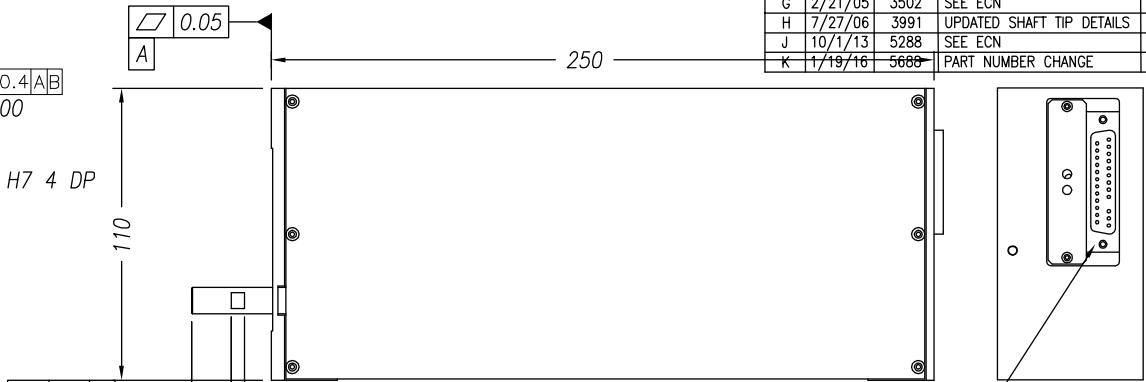
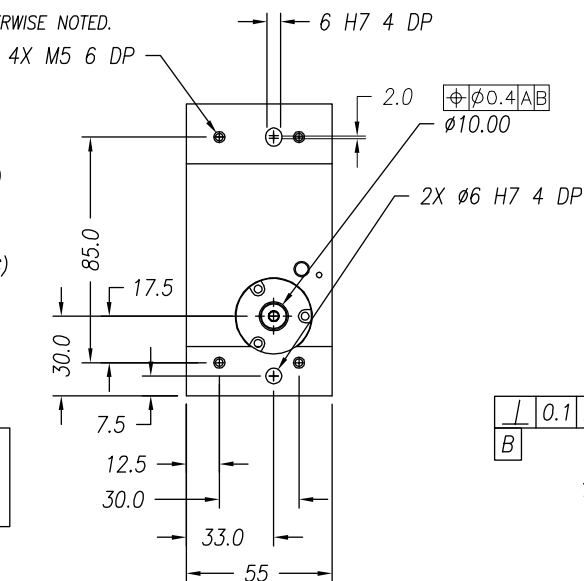


NOTES: (UNLESS OTHERWISE SPECIFIED)

- ALL DIMENSIONS ARE IN MILLIMETERS UNLESS OTHERWISE NOTED.
- LINEAR SPECIFICATION:**
 LINEAR STROKE: 50.0 +1.0/-0 mm
 FORCE CONSTANT: 19.5 N/AMP
 PEAK FORCE: 25.5 N @ 1.3 AMPS (24 VDC)
 CONTINUOUS FORCE: 19.5 N @ 1.0 AMPS (24 VDC)
 COIL DC RESISTANCE: 16.5 OHMS @ 22°C
 COIL INDUCTANCE: 4.3 mH @ 1 kHz
 ENCODER RESOLUTION: 0.5, 1, 5 MICROMETER (NC)
 ENCODER ACCURACY: ±4 Counts
- MOVING MASS: 310 GRAMS
- TOTAL MASS: 3000 GRAMS
- OPERATING TEMPERATURE: -10°C TO +65°C

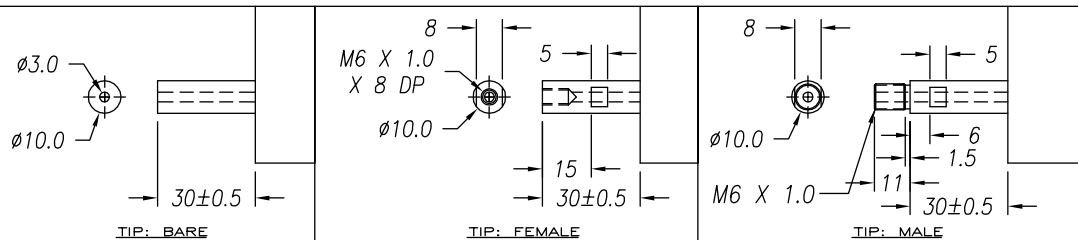
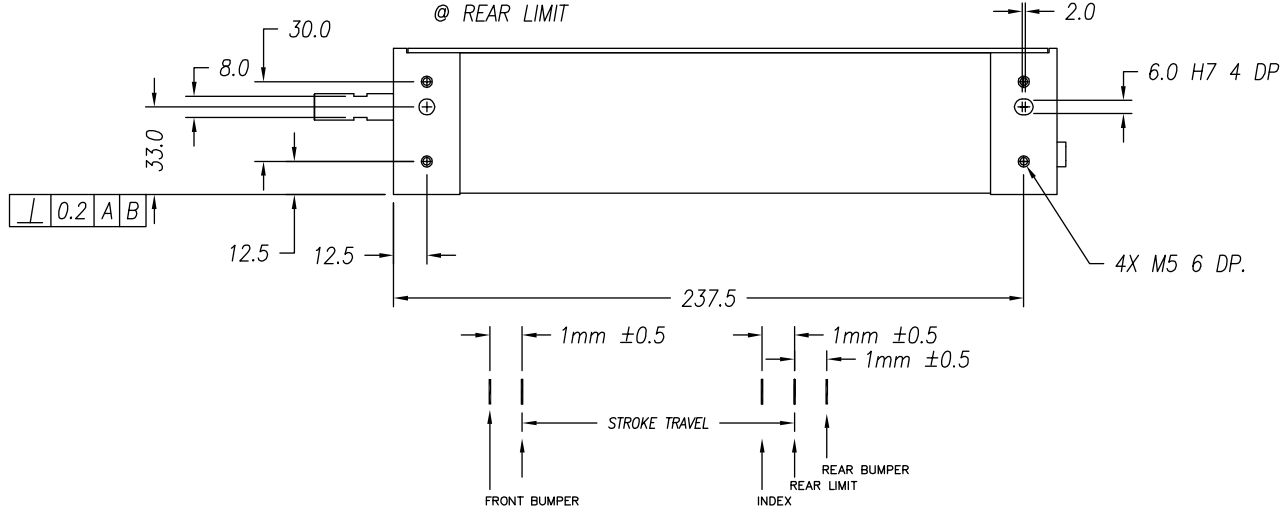
SIGNATURE NEEDED FOR ORDER APPROVAL
 SIGN _____ DATE _____
 APPROVAL NOT RECEIVED WITHIN
 48 HOURS MAY AFFECT DELIVERY



REVISIONS				
REV	DATE	ECN	DESCRIPTION	APP
G	2/21/05	3502	SEE ECN	SMH
H	7/27/06	3991	UPDATED SHAFT TIP DETAILS	LR
J	10/1/13	5288	SEE ECN	KGS
K	1/19/16	5688	PART NUMBER CHANGE	SB

DB-25P PINOUT

1	+5VDC	14	LINEAR PHASE A+
2	+5V RETURN	15	NO CONNECTION
3	NO CONNECTION	16	LINEAR PHASE B+
4	LINEAR PHASE A-	17	NO CONNECTION
5	NC	18	LINEAR INDEX +
6	LIMIT RETURN	19	COIL -
7	COIL +	20	COIL -
8	COIL +	21	NO CONNECTION
9	LINEAR PHASE B-	22	NO CONNECTION
10	NO CONNECTION	23	LINEAR INDEX -
11	LIMIT +	24	NO CONNECTION
12	LIMIT -	25	NO CONNECTION
13	NO CONNECTION		



TOLERANCES ARE: X. ± 0.50 X.X ± 0.1 X.XX ± 0.05 X.XXX ± ANGULARITY ± 0.1° CONCENTRIC ± 0.01 ROUNDNESS ± 0.05 EDGE BREAK 0.2 MAX CHAMFER 0.2 MAX	MATERIAL: ALUMINUM 6061-T6 HEAT TREAT: _____ / _____ RC _____ DEEP	SMAC		REF. NUMBER LAL55-050-5	
		DESIGNED BY: TOAN VU DRAWN BY: KARL STOCKS	DATE: 09/09/02 DATE: 10/1/13	CHECKED BY: APPROVED BY:	DATE: DATE:
FILE NAME: LAL55-050-5_J	MACHINE FINISH: 1.6 ✓	PART NAME: LAL55-050-5X-1		SCALE: NONE DO NOT SCALE DWG	
EXCEPT NOTED. PROTECTIVE FINISH ELECTROLESS NICKEL	DWG SIZE: B	PART NUMBER: LAL55-050-5X-1		REVISION: K	