

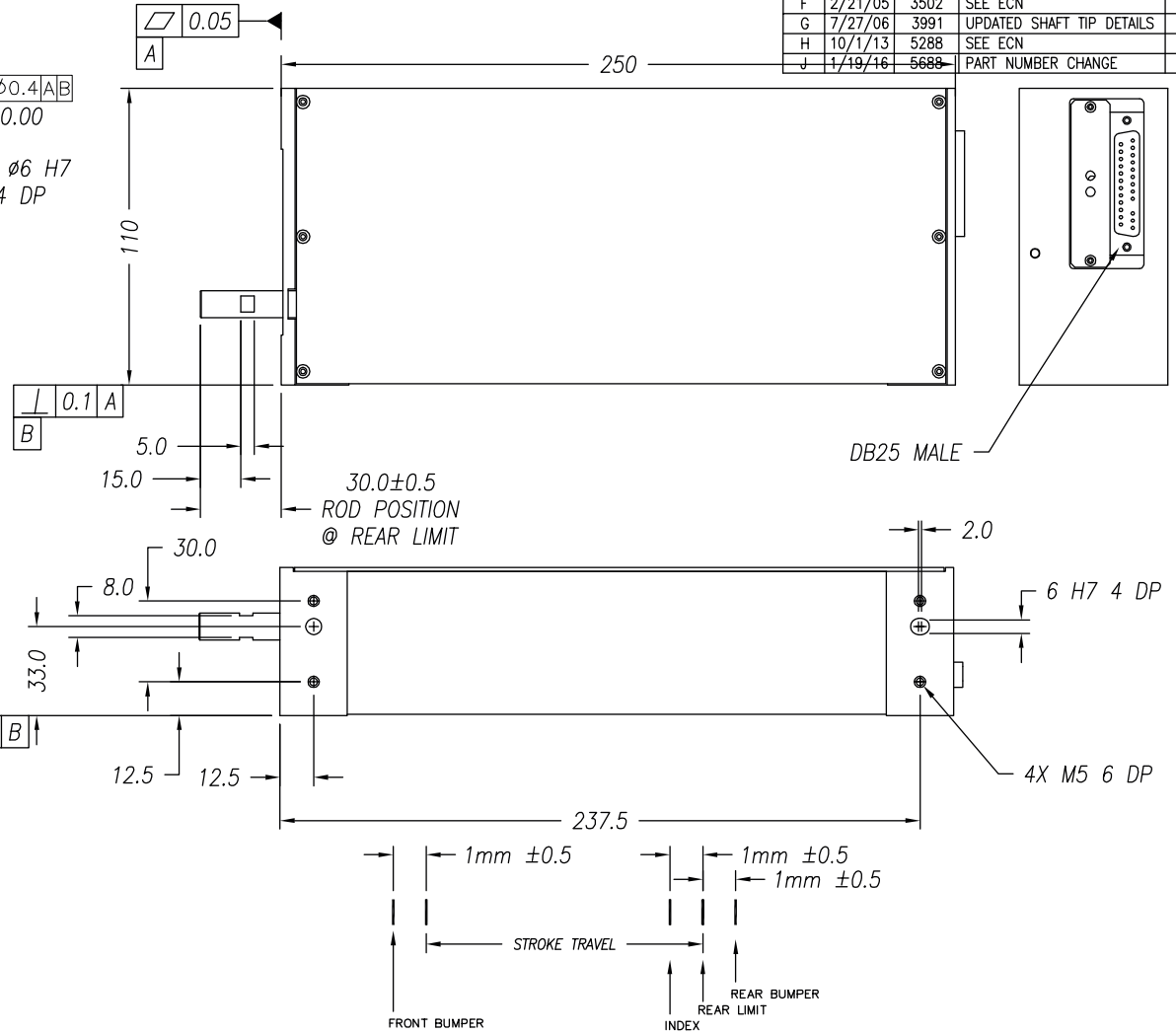
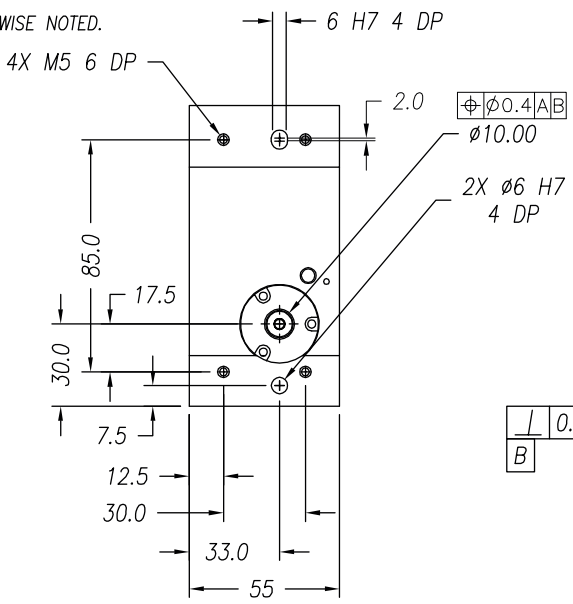
REVISIONS

REV	DATE	ECN	DESCRIPTION	APP
F	2/21/05	3502	SEE ECN	SMH
G	7/27/06	3991	UPDATED SHAFT TIP DETAILS	LR
H	10/1/13	5288	SEE ECN	KGS
J	1/19/16	5688	PART NUMBER CHANGE	SB

NOTES: (UNLESS OTHERWISE SPECIFIED)

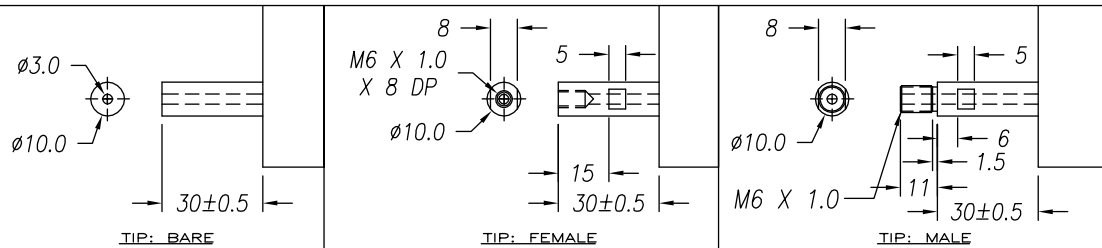
- ALL DIMENSIONS ARE IN MILLIMETER UNLESS OTHERWISE NOTED.
- LINEAR SPECIFICATION:**
 LINEAR STROKE: 100 +1.0/-0 mm
 FORCE CONSTANT: 13.0 N/AMP
 PEAK FORCE: 16.5 N @ 1.3 AMPS (24 VDC)
 CONTINUOUS FORCE: 13.0 N @ 1.0 AMPS (24 VDC)
 COIL DC RESISTANCE: 16.5 OHMS @ 22°C
 COIL INDUCTANCE: 4.3 mH @ 1 kHz
 ENCODER RESOLUTION: 0.5, 1, 5 MICROMETER
 ENCODER ACCURACY: ±4 Counts
- MOVING MASS: 300 GRAMS
- TOTAL MASS: 3800 GRAMS
- OPERATING TEMPERATURE: 0°C TO +65°C

SIGNATURE NEEDED FOR ORDER APPROVAL
 SIGN _____ DATE _____
 APPROVAL NOT RECEIVED WITHIN
 48 HOURS MAY AFFECT DELIVERY



DB-25P PINOUT

1	+5VDC	14	LINEAR PHASE A+
2	+5V RETURN	15	NO CONNECTION
3	NO CONNECTION	16	LINEAR PHASE B+
4	LINEAR PHASE A-	17	NO CONNECTION
5	NC	18	LINEAR INDEX +
6	LIMIT RETURN	19	COIL -
7	COIL +	20	COIL -
8	COIL +	21	NO CONNECTION
9	LINEAR PHASE B-	22	NO CONNECTION
10	NO CONNECTION	23	LINEAR INDEX -
11	LIMIT +	24	NO CONNECTION
12	LIMIT -	25	NO CONNECTION
13	NO CONNECTION		



TOLERANCES ARE:		MATERIAL:	REF. NUMBER	
X.	± 0.50	ALUMINUM	LAL55-100-5	
X.X	± 0.1	6061-T6		
X.XX	± 0.05	HEAT TREAT:	DESIGNED BY:	DATE:
X.XXX	±	RC	TOAN VU	09/09/02
ANGULARITY	± 0.1°	DEEP	DRAWN BY:	APPROVED BY:
CONCENTRIC	± 0.01		KARL STOCKS	
ROUNDNESS	± 0.05	MACHINE FINISH:	PART NAME:	
EDGE BREAK	0.2 MAX	1.6/	LAL55-100-5X-1	
CHAMFER	0.2 MAX	EXCEPT NOTED.	SCALE:	DWG SIZE:
FILE NAME:	LAL55-100-5_H	ELECTROLESS NICKEL	NONE	B
		SPEC. NUMBER:	PART NUMBER:	
			LAL55-100-5X-1	
			DO NOT SCALE DWG	
			REVISION:	
			J	
			CONTRACT:	
			STD	
			SHEET NUMBER:	
			1 of 1	