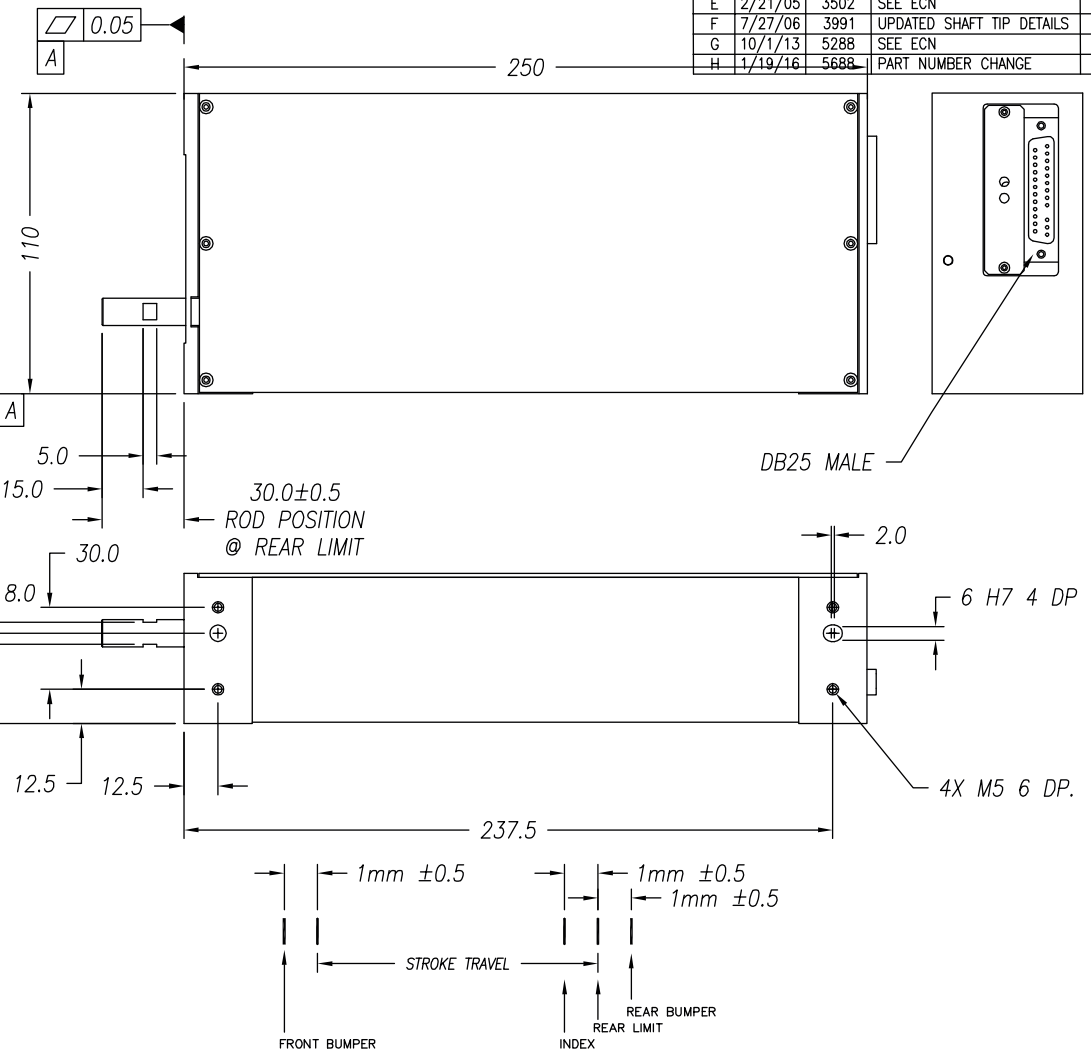
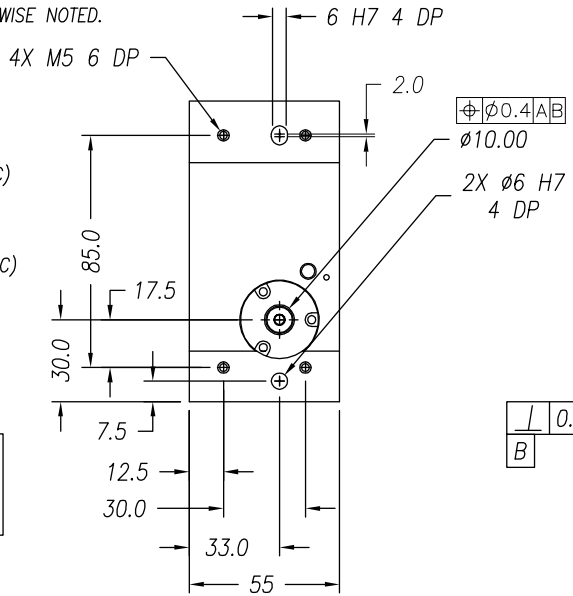


REVISIONS

REV	DATE	ECN	DESCRIPTION	APP
E	2/21/05	3502	SEE ECN	SMH
F	7/27/06	3991	UPDATED SHAFT TIP DETAILS	LR
G	10/1/13	5288	SEE ECN	KGS
H	1/19/16	5688	PART NUMBER CHANGE	SB

NOTES: (UNLESS OTHERWISE SPECIFIED)

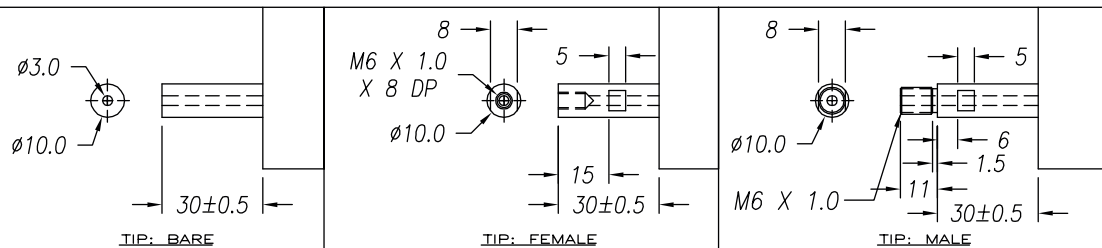
- ALL DIMENSIONS ARE IN MILLIMETER UNLESS OTHERWISE NOTED.
- LINEAR SPECIFICATION:**
 LINEAR STROKE: 100.0 +1.0/-0 mm
 FORCE CONSTANT: 17.0 N/AMP
 PEAK FORCE: 25.0 N @ 1.8 AMPS (48 VDC)
 CONTINUOUS FORCE: 17.0 N @ 1.0 AMPS (48 VDC)
 COIL DC RESISTANCE: 25 OHMS @ 22°C
 COIL INDUCTANCE: 6.8 mH @ 1 kHz
 ENCODER RESOLUTION: 0.5, 1, 5 MICROMETER (NC)
 ENCODER ACCURACY: ±4 Counts
- MOVING MASS: 300 GRAMS
- TOTAL MASS: 3800 GRAMS
- OPERATING TEMPERATURE: 0°C TO +65°C



SIGNATURE NEEDED FOR ORDER APPROVAL
 SIGN _____ DATE _____
 APPROVAL NOT RECEIVED WITHIN
 48 HOURS MAY AFFECT DELIVERY

DB-25P PINOUT

1	+5VDC	14	LINEAR PHASE A+
2	+5V RETURN	15	NO CONNECTION
3	NO CONNECTION	16	LINEAR PHASE B+
4	LINEAR PHASE A-	17	NO CONNECTION
5	NC	18	LINEAR INDEX +
6	LIMIT RETURN	19	COIL -
7	COIL +	20	COIL -
8	COIL +	21	NO CONNECTION
9	LINEAR PHASE B-	22	NO CONNECTION
10	NO CONNECTION	23	LINEAR INDEX -
11	LIMIT +	24	NO CONNECTION
12	LIMIT -	25	NO CONNECTION
13	NO CONNECTION		



TOLERANCES ARE: X. ± 0.50 X.X ± 0.1 X.XX ± 0.05 X.XXX ± ANGULARITY ± 0.1° CONCENTRIC ± 0.01 ROUNDNESS ± 0.05 EDGE BREAK 0.2 MAX CHAMFER 0.2 MAX	MATERIAL: ALUMINUM 6061-T6	SMAC REF. NUMBER LAL55-100-7			
	HEAT TREAT: _____ RC _____ DEEP			DESIGNED BY: TOAN VU	DATE: 09/09/02
FILE NAME: LAL55-100-7_G	MACHINE FINISH: 1.6/	PART NAME: LAL55-100-7X-1		SHEET NUMBER: 1 of 1	
EXCEPT NOTED. PROTECTIVE FINISH ELECTROLESS NICKEL	SCALE: NONE	DWG SIZE: B	PART NUMBER: LAL55-100-7X-1	REVISION: H	
SPEC. NUMBER:	DO NOT SCALE DWG				