

NOTES: (UNLESS OTHERWISE SPECIFIED)

1. ALL DIMENSIONS ARE IN MILLIMETERS.

2. **LINEAR SPECIFICATION:**

LINEAR STROKE: 15 +1.0/-0 mm

FORCE CONSTANT: 60 N/AMP

PEAK FORCE: 185N @ 3.2 AMPS (48VDC)

COIL DC RESISTANCE: 15 OHMS @ 22°C

ENCODER RESOLUTION: 0.5, 1 OR 5 MICROMETERS

ENCODER ACCURACY: ± 4 COUNTS

3. MOVING MASS: 500 GRAMS

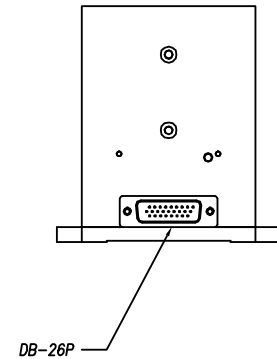
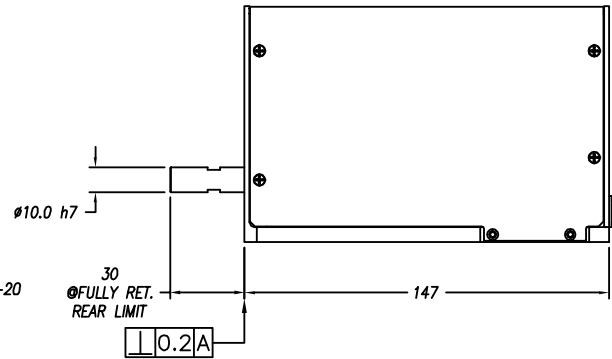
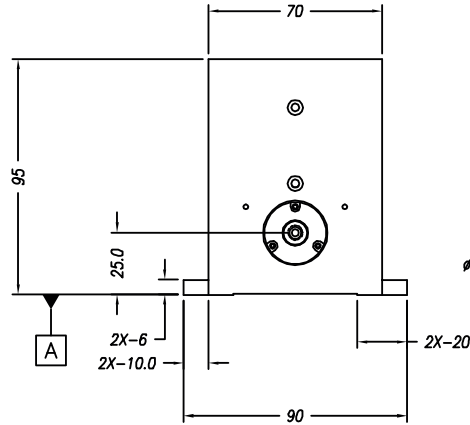
4. TOTAL MASS: 3KG

5. OPERATING TEMPERATURE: 0°C TO +35°C

SIGNATURE NEEDED FOR ORDER APPROVAL
SIGN _____ DATE _____
APPROVAL NOT RECEIVED WITHIN
48 HOURS MAY AFFECT DELIVERY

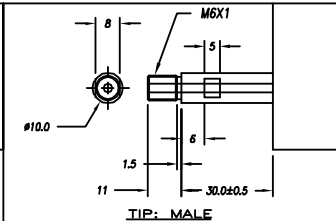
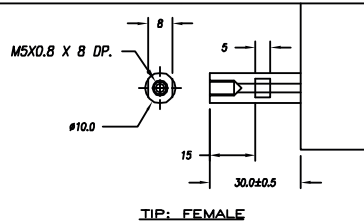
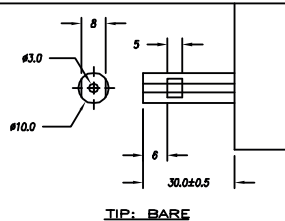
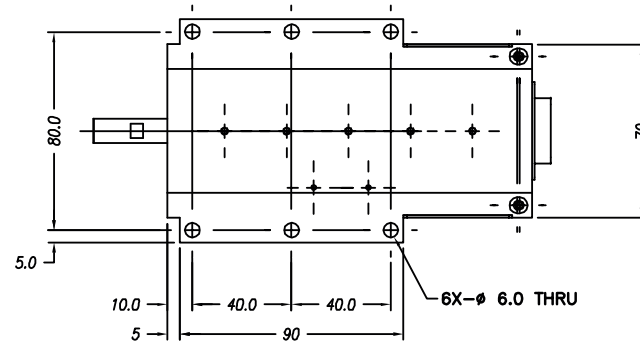
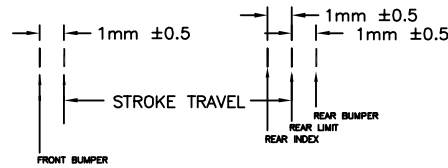
REVISIONS

REV	DATE	ECN	DESCRIPTION	APP
A	10/14/09		NEW	KGS
B	4/24/13	5217	CORRECT MOUNTING HOLES	KGS
C	10/1/13	5288	SEE ECN	KGS
D	1/19/16	5688	PART NUMBER CHANGE	SB



DB-26P PINOUT

1	(L) PH. A+
2	(L) PH. B+
3	(L) PH. Z+
4	NC
5	NC
6	I/O RTN
7	NC
8	NC
9	NC
10	(L) PH. A-
11	(L) PH. B-
12	(L) PH. Z-
13	NC/(R) HOME
14	LIMIT +
15	LIMIT -
16	NC
17	NC
18	NC
19	+5VDC
20	5V RTN
21	(L) COIL +
22	(L) COIL +
23	(L) COIL -
24	(L) COIL -
25	NC
26	NC



TOLERANCES ARE: X. ± 0.50 X.X ± 0.1 X.XX ± 0.05 X.XXX ± ANGULARITY ± 0.1° CONCENTRIC ± 0.01 ROUNDNESS ± 0.05 EDGE BREAK 0.2 MAX CHAMFER 0.2 MAX	MATERIAL: ALUMINIUM	SMAC		REF. NUMBER LAL95-015-8		
		HEAT TREAT: _____ RC	DESIGNED BY: TOAN VU	DATE: 10/14/09	CHECKED BY:	DATE:
MACHINE FINISH: 1.6	EXCEPT NOTED.	DRAWN BY: KARL STOCKS	DATE: 10/1/25/13	APPROVED BY:	DATE:	SHEET NUMBER: 1 OF 1
PROTECTIVE FINISH ELECTROLESS NICKEL	SCALE: NONE	PART NAME: LAL95-015-7X-2		DWG SIZE: B	PART NUMBER: LAL95-015-7X-2	REVISION: D
FILE NAME: LAL95-015-8	SPEC. NUMBER:	DO NOT SCALE DWG				