

NOTES: (UNLESS OTHERWISE SPECIFIED)

1. ALL DIMENSIONS ARE IN MM UNLESS OTHERWISE NOTED.

2. ALL DIMENSIONS APPLY AFTER PLATING.

3. ACTUATOR SPECIFICATIONS:

LINEAR STROKE: 50.0 MM

FORCE CONSTANT: 19 N/AMP

PEAK FORCE: 25 N @ 1.6 AMPS (24 VDC)

COIL DC RESISTANCE: 15 OHMS @ 22°C

COIL INDUCTANCE: TBD mH @ 1KHz

MAXIMUM POWER DISSIPATE TO COIL: 32 WATTS

LINEAR ENCODER RESOLUTION: 5, 1, 0.1 μM

ENCODER ACCURACY: ±4 COUNTS

MOVING MASS: 0.3 KG

TOTAL MASS: 2.9 KG

THETA SPECIFICATION: (PITTMAN 30mm)

ROTATION ANGLE: 360° CONTINUOUS

CONTINUOUS TORQUE: 0.036 Nm @0.79 A (24 DCV)

PEAK TORQUE: 0.080 Nm @1.70 A (24 DCV)

TORQUE CONSTANT: 0.054 Nm/A

GEAR RATIO: NONE (DIRECT DRIVE)

ROTARY MOTOR TYPE: DC BRUSH

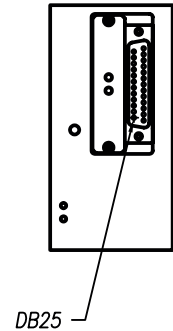
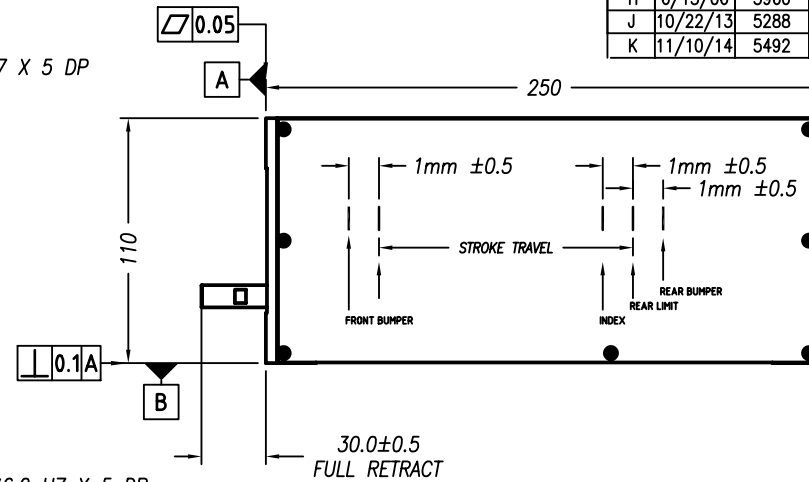
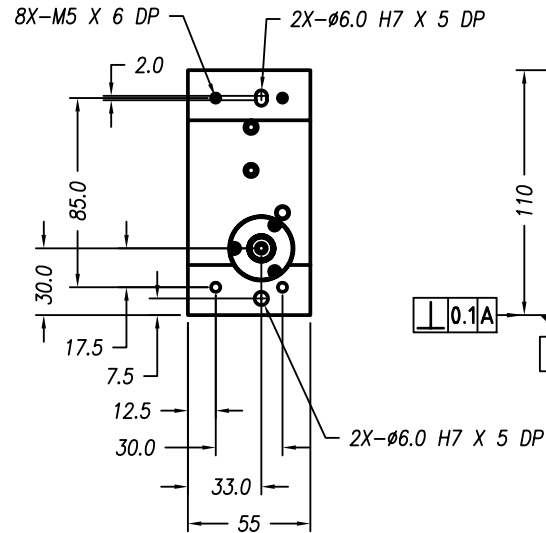
ENCODER RESOLUTION: 2000 CPR

ENCODER ACCURACY: ± 5 COUNTS (0° BACK LASH)

4. OPERATING TEMPERATURE: 0°C TO +65°C

REVISIONS

REV	DATE	ECN	DESCRIPTION	APP
F	10/17/02	2326	SEE ECN	SMH
G	2/21/05	3502	SEE ECN	SMH
H	6/15/06	3960	CHANGE TO MAXON MTR	LR
J	10/22/13	5288	SEE ECN	KGS
K	11/10/14	5492	SEE ECN	RH

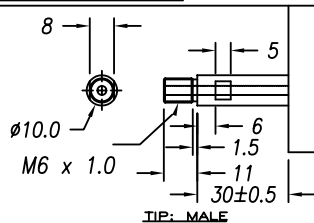
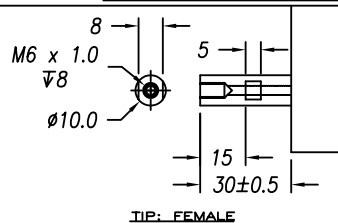
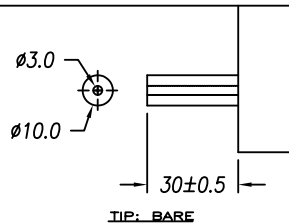
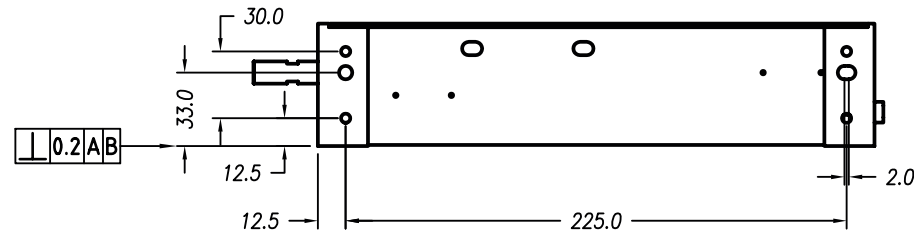


DB-25P PINOUT

1	+5VDC
2	+5V RETURN
3	ROTARY MOTOR-
4	LINEAR PHASE A-
5	NC
6	TBD
7	COIL +
8	COIL +
9	LINEAR PHASE B-
10	ROTARY MOTOR+
11	LIMIT + (TBD)
12	LIMIT - (TBD)
13	ROTARY PHASE B-

14	LINEAR PHASE A+
15	ROTARY PHASE A+
16	LINEAR PHASE B+
17	ROTARY PHASE B+
18	LINEAR INDEX +
19	COIL -
20	COIL -
21	ROTARY PHASE A-
22	ROTARY COARSE INDEX
23	LINEAR INDEX -
24	ROTARY FINE INDEX
25	ROTARY FINE INDEX

SIGNATURE NEEDED FOR ORDER APPROVAL
SIGN _____ DATE _____
APPROVAL NOT RECEIVED WITHIN
48 HOURS MAY AFFECT DELIVERY



TOLERANCES ARE:

X	± 0.50
X.X	± 0.1
X.XX	± 0.05
X.XXX	±
ANGULARITY	± 0.1°
CONCENTRIC	± 0.01
ROUNDNESS	± 0.05
EDGE BREAK	0.2 MAX
CHAMFER	0.1 MAX

FILE NAME:
LAR55-50-5_K

MATERIAL:
ALUMINUM
6061-T6

HEAT TREAT:
RC
DEEP

MACHINE FINISH:
1.6 ✓

EXCEPT NOTED.

PROTECTIVE FINISH
ELECTROLESS NICKEL

SPEC. NUMBER:

SMAC				REF. NUMBER	
DESIGNED BY: TOAN VU				DATE: 6/15/06	
DRAWN BY: KARL STOCKS				DATE: 10/22/13	
PART NAME: LAR55-50-5X-1				SHEET NUMBER: 1 OF 1	
SCALE: NONE		DWG SIZE: B		PART NUMBER: LAR55-50-5X-1	
DO NOT SCALE DWG				REVISION: K	