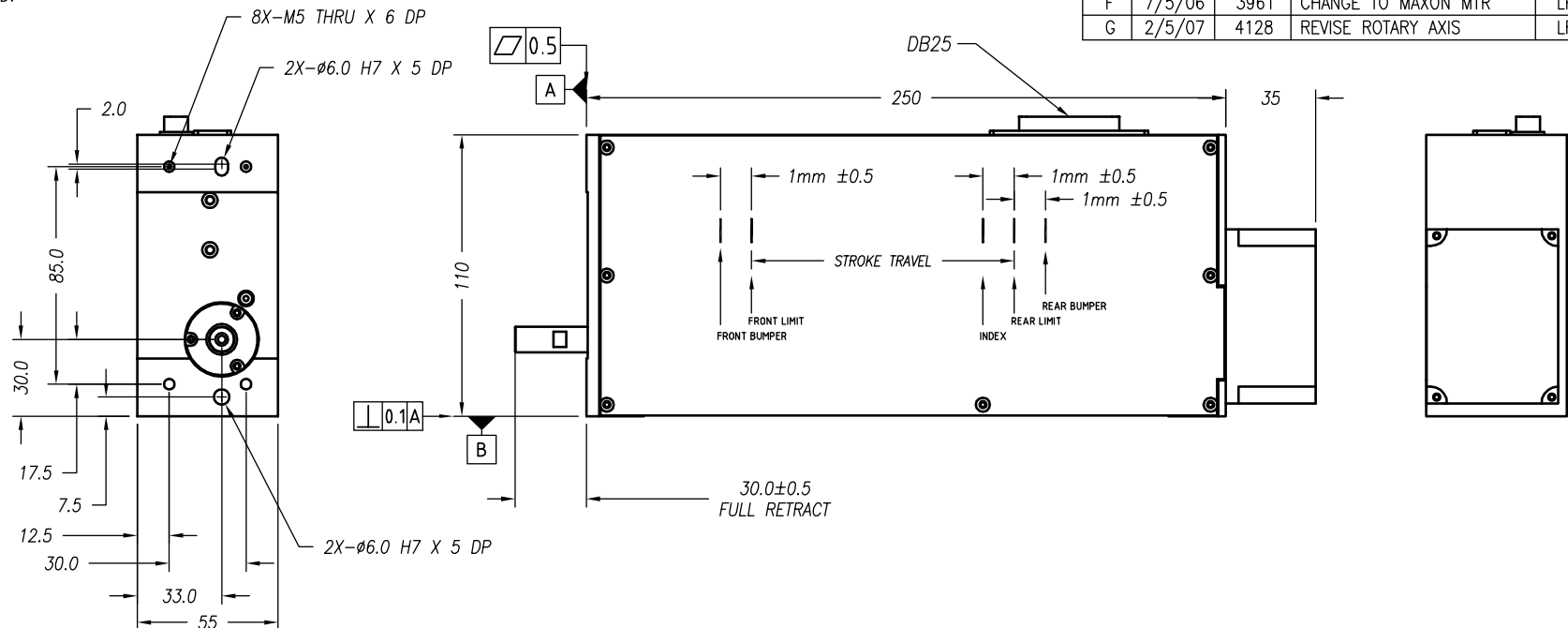


**NOTES: (UNLESS OTHERWISE SPECIFIED)**

- ALL DIMENSIONS ARE IN MM UNLESS OTHERWISE NOTED.
- ALL DIMENSIONS APPLY AFTER PLATING.
- ACTUATOR SPECIFICATIONS:**
  - LINEAR STROKE:** 100.0 MM
  - FORCE CONSTANT:** 14.7 N/AMP
  - PEAK FORCE:** 24.5 N @ 1.6 AMPS (24 VDC)
  - CONTINUOUS FORCE:** 14.7 N @ 1 A (24VDC)
  - COIL DC RESISTANCE:** 15.1 OHMS @ 22°C
  - LINEAR ENCODER RESOLUTION:** 0.5, 1.0, 5.0 um
  - ENCODER ACCURACY:** ±4 COUNTS
  - THETA SPECIFICATION: (DIRECT OUTPUT SHAFT)**
    - ROTATION ANGLE:** 360° CONTINUOUS
    - PEAK TORQUE:** 0.2 Nm (4.0 A, 24 VDC)
    - CONTINUOUS TORQUE:** 0.10 Nm @2.15 A (24 DCV)
    - MAXIMUM RPM :** 500 (WITH 0 LOAD & VACUUM)
    - GEAR RATIO:** NONE (DIRECT DRIVE)
    - ROTARY MOTOR TYPE:** DC BRUSH
    - ENCODER RESOLUTION:** 20000 CPR
    - ENCODER ACCURACY:** ± 5 COUNTS (0° BACK LASH)
- OPERATING TEMPERATURE:** -10°C TO +65°C
- MOVING MASS:** 800 GRAMS
- TOTAL MASS:** 3950 GRAMS

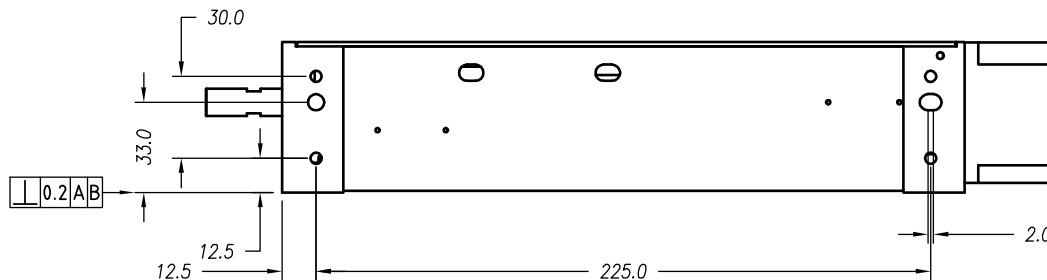
REVISIONS				
REV	DATE	ECN	DESCRIPTION	APP
F	7/5/06	3961	CHANGE TO MAXON MTR	LR
G	2/5/07	4128	REVISE ROTARY AXIS	LR



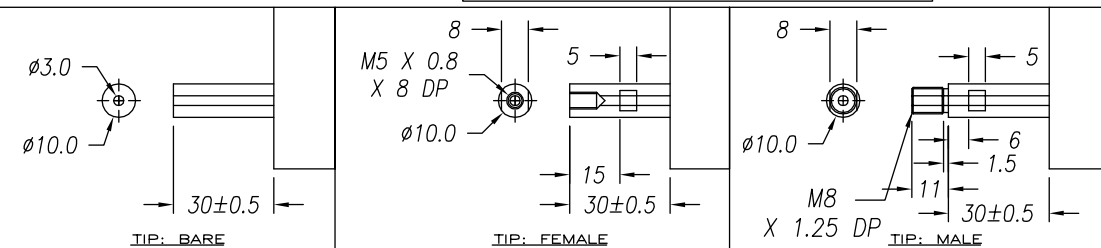
**DB-25P PINOUT**

1	+5VDC
2	+5V RETURN
3	ROTARY MOTOR-
4	LINEAR PHASE A-
5	NC
6	TBD
7	COIL +
8	COIL -
9	LINEAR PHASE B-
10	ROTARY MOTOR+
11	LIMIT + (TBD)
12	LIMIT - (TBD)
13	ROTARY PHASE B-

14	LINEAR PHASE A+
15	ROTARY PHASE A+
16	LINEAR PHASE B+
17	ROTARY PHASE B+
18	LINEAR INDEX +
19	COIL -
20	COIL +
21	ROTARY PHASE A-
22	ROTARY COARSE INDEX
23	LINEAR INDEX -
24	ROTARY FINE INDEX
25	ROTARY FINE INDEX



SIGNATURE NEEDED FOR ORDER APPROVAL  
 SIGN \_\_\_\_\_ DATE \_\_\_\_\_  
 APPROVAL NOT RECEIVED WITHIN  
 48 HOURS MAY AFFECT DELIVERY



TOLERANCES ARE: X ± 0.50 X.X ± 0.1 X.XX ± 0.05 X.XXX ± ANGULARITY ± 0.1° CONCENTRIC ± 0.01 ROUNDNESS ± 0.05 EDGE BREAK 0.2 MAX CHAMFER 0.1 MAX	MATERIAL: ALUMINUM 6061-T6	<b>SMAC</b>		REF. NUMBER LAR55-100-5_G	
HEAT TREAT: RC DEEP	DESIGNED BY: TOAN VU			DATE: 7/5/06	CHECKED BY:
ANGULARITY ± 0.1° CONCENTRIC ± 0.01 ROUNDNESS ± 0.05 EDGE BREAK 0.2 MAX CHAMFER 0.1 MAX	MACHINE FINISH: 1.6/	PART NAME: LAR55-100-5		SHEET NUMBER: 1 of 1	
EXCEPT NOTED.	PROTECTIVE FINISH ELECTROLESS NICKEL	SCALE: NONE	DWG SIZE: B	PART NUMBER: LAR55-100-5	REVISION: G1
FILE NAME: LAR55-100-5_GX-1_G1	SPEC. NUMBER:	DO NOT SCALE DWG			