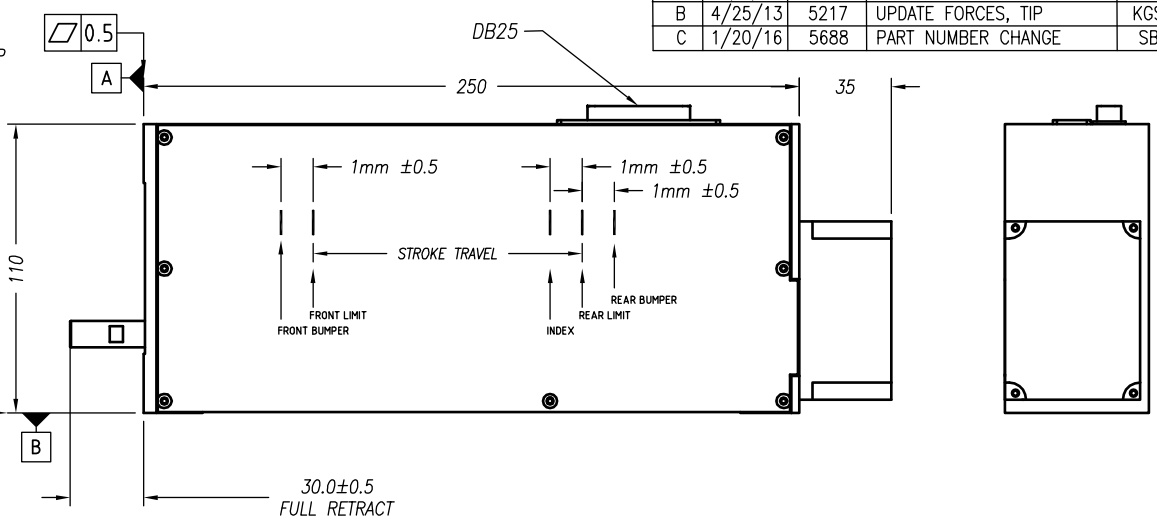
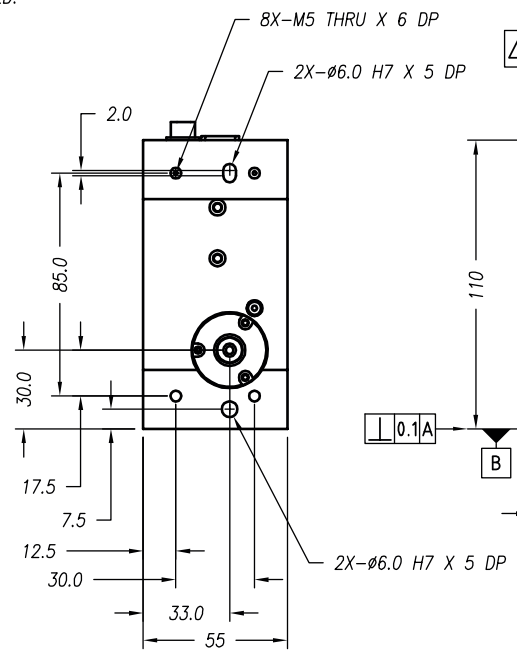


REVISIONS

REV	DATE	ECN	DESCRIPTION	APP
A	67/5/06	3962	INITIAL RELEASE	LR
B	4/25/13	5217	UPDATE FORCES, TIP	KGS
C	1/20/16	5688	PART NUMBER CHANGE	SB

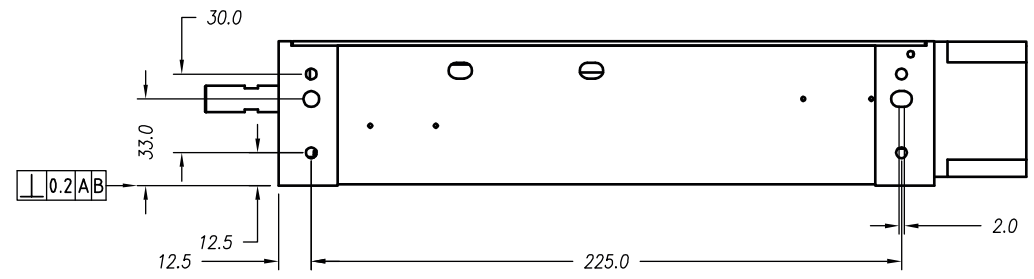
NOTES: (UNLESS OTHERWISE SPECIFIED)

- ALL DIMENSIONS ARE IN MM UNLESS OTHERWISE NOTED.
- ALL DIMENSIONS APPLY AFTER PLATING.
- ACTUATOR SPECIFICATIONS:
LINEAR STROKE: 100.0 MM
FORCE CONSTANT: 13 N/AMP
PEAK FORCE: 25 N @ 2 AMPS (48 VDC)
COIL DC RESISTANCE: 24 OHMS @ 22°C
LINEAR ENCODER RESOLUTION: 0.1, 1.0 5.0uM
ENCODER ACCURACY: ±4 COUNTS
MOVING MASS: 500 GRAMS
TOTAL MASS: 3850 GRAMS
THETA SPECIFICATION: (DIRECT OUTPUT SHAFT)
ROTATION ANGLE: 360° CONTINUOUS
PEAK TORQUE: 0.2 Nm (4.0 A, 24 VDC)
CONTINUOUS TORQUE: 0.10 Nm @2.15 A (24 DCV)
MAXIMUM RPM : 500 (WITH 0 LOAD & VACUUM)
GEAR RATIO: NONE (DIRECT DRIVE)
ROTARY MOTOR TYPE: DC BRUSH
ENCODER RESOLUTION: 2000 CPR
ENCODER ACCURACY: ± 5 COUNTS (0° BACK LASH)
- OPERATING TEMPERATURE: -10°C TO +65°C

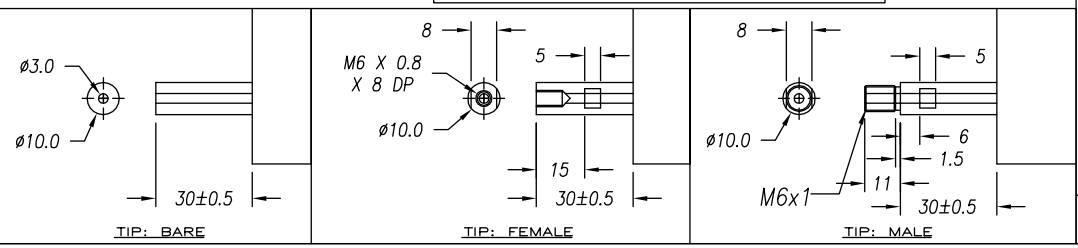


DB-25P PINOUT

1	+5VDC	14	LINEAR PHASE A+
2	+5V RETURN	15	ROTARY PHASE A+
3	ROTARY MOTOR-	16	LINEAR PHASE B+
4	LINEAR PHASE A-	17	ROTARY PHASE B+
5	NC	18	LINEAR INDEX +
6	TBD	19	COIL -
7	COIL +	20	COIL -
8	COIL +	21	ROTARY PHASE A-
9	LINEAR PHASE B-	22	ROTARY COARSE INDEX
10	ROTARY MOTOR+	23	LINEAR INDEX -
11	LIMIT + (TBD)	24	ROTARY FINE INDEX
12	LIMIT - (TBD)	25	ROTARY FINE INDEX
13	ROTARY PHASE B-		



SIGNATURE NEEDED FOR ORDER APPROVAL
 SIGN _____ DATE _____
 APPROVAL NOT RECEIVED WITHIN
 48 HOURS MAY AFFECT DELIVERY



TOLERANCES ARE: X. ± 0.50 X.X ± 0.1 X.XX ± 0.05 X.XXX ± 0.01 ANGULARITY ± 0.1° CONCENTRIC ± 0.01 ROUNDNESS ± 0.05 EDGE BREAK 0.2 MAX CHAMFER 0.1 MAX	MATERIAL: ALUMINUM 6061-T6	SMAC		REF. NUMBER LAR55-100-7	
		HEAT TREAT: _____ RC _____ DEEP	DESIGNED BY: TOAN VU DRAWN BY: KARL STOCKS	DATE: 7/5/06 DATE: 4/24/13	CHECKED BY: APPROVED BY:
MACHINE FINISH: 1.6/√	EXCEPT NOTED. PROTECTIVE FINISH ELECTROLESS NICKEL	PART NAME: LAR55-100-7X-1		SHEET NUMBER: 1 of 1	
FILE NAME: LAR55-100-7_B	SPEC. NUMBER:	SCALE: NONE DO NOT SCALE DWG	DWG SIZE: B	PART NUMBER: LAR55-100-7X-1	REVISION: C