

NOTES (UNLESS OTHERWISE SPECIFIED)

1. ALL DIMENSIONS APPLY AFTER PLATING.
2. BREAK ALL SHARP EDGES AND REMOVE BURRS.
- 3 ALL DIMENSIONS ARE IN mm UNLESS OTHERWISE NOTED.
4. LINEAR STROKE: 50 +1/-0mm
5. PEAK FORCE: AVG. 45N (48V@1.6A)
6. FORCE CONSTANT: AVG. 30N/A@48V
7. COIL RESISTANCE: 29-30 ohm
8. INDUCTANCE: 20.45 mH
9. ENCODER RESOLUTION: 5,1,um
10. ENCODER REPEATABILITY: ± 4 ENC. COUNTS
11. MOVING MASS: 0.335kg
12. TOTAL MASS: 2.575kg
13. OPERATING TEMPERATURE: 0°C TO 65°C

DB 26P PINOUT

PIN	FUNCTION
1	(AXIS 1) PH. A+
2	(AXIS 1) PH. B+
3	(AXIS 1) PH. Z+
4	NC
5	NC
6	I/O RTN
7	NC
8	NC
9	NC
10	(AXIS 1) PH. A-
11	(AXIS 1) PH. B-
12	(AXIS 1) PH. Z-
13	NC
14	NC
15	NC
16	NC
17	NC
18	NC
19	+5VDC
20	5V RTN
21	(AXIS 1) COIL +
22	(AXIS 1) COIL +
23	(AXIS 1) COIL -
24	(AXIS 1) COIL -
25	NC
26	NC

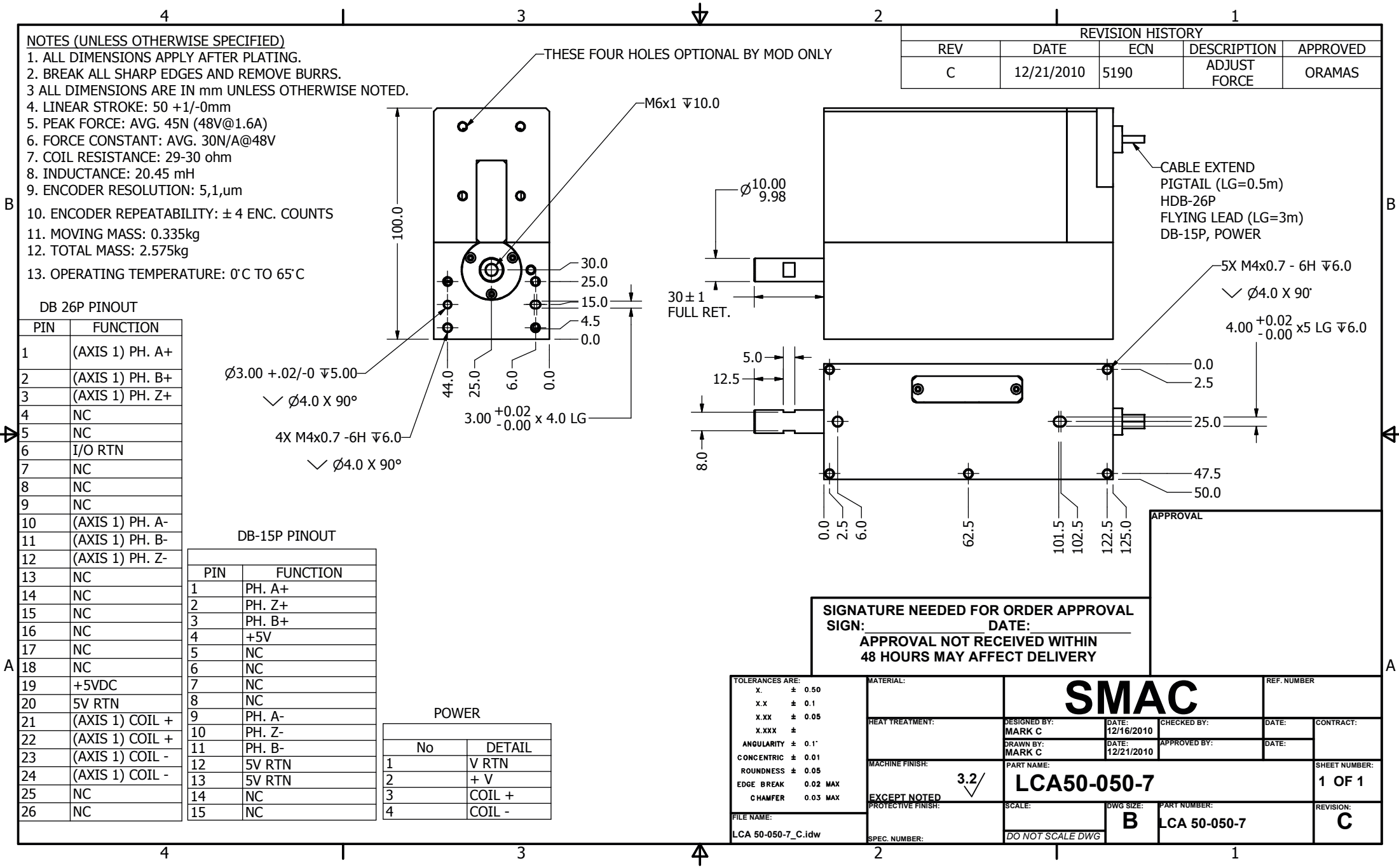
DB-15P PINOUT

PIN	FUNCTION
1	PH. A+
2	PH. Z+
3	PH. B+
4	+5V
5	NC
6	NC
7	NC
8	NC
9	PH. A-
10	PH. Z-
11	PH. B-
12	5V RTN
13	5V RTN
14	NC
15	NC

POWER

No	DETAIL
1	V RTN
2	+ V
3	COIL +
4	COIL -

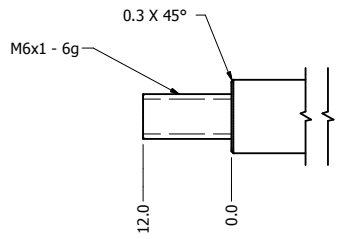
REVISION HISTORY				
REV	DATE	ECN	DESCRIPTION	APPROVED
C	12/21/2010	5190	ADJUST FORCE	ORAMAS



SIGNATURE NEEDED FOR ORDER APPROVAL
 SIGN: _____ DATE: _____
APPROVAL NOT RECEIVED WITHIN 48 HOURS MAY AFFECT DELIVERY

TOLERANCES ARE: X. ± 0.50 X.X ± 0.1 X.XX ± 0.05 X.XXX ± ANGULARITY ± 0.1° CONCENTRIC ± 0.01 ROUNDNESS ± 0.05 EDGE BREAK 0.02 MAX CHAMFER 0.03 MAX		MATERIAL: _____		<h1 style="text-align: center;">SMAC</h1>		REF. NUMBER							
HEAT TREATMENT: _____		DESIGNED BY: MARK C				DATE: 12/16/2010		CHECKED BY: _____		DATE: _____		CONTRACT: _____	
MACHINE FINISH: 3.2/		EXCEPT NOTED PROTECTIVE FINISH: _____		DRAWN BY: MARK C		DATE: 12/21/2010		APPROVED BY: _____		DATE: _____		SHEET NUMBER: 1 OF 1	
FILE NAME: LCA 50-050-7_C.idw		SPEC. NUMBER: _____		PART NAME: <h2 style="text-align: center;">LCA50-050-7</h2>		SCALE: _____		DWG SIZE: <h2 style="text-align: center;">B</h2>		PART NUMBER: LCA 50-050-7		REVISION: <h2 style="text-align: center;">C</h2>	

REVISION HISTORY				
REV	DATE	ECN	DESCRIPTION	APPROVED
A	2/9/2015		RELEASE	MAC



TOLERANCES ARE: X ± 0.50 XX ± 0.1 XXX ± 0.05 XXXX ± ANGULARITY ± 0.1° CONCENTRIC ± 0.01 ROUNDNESS ± 0.05 EDGE BREAK 0.02 MAX CHAMFER 0.03 MAX	MATERIAL: Stainless Steel	SMAC		REF. NUMBER
	HEAT TREATMENT:	DESIGNED BY: MARK C	DATE: 4/23/2010	CHECKED BY: DATE:
	MACHINE FINISH: EXCEPT NOTED PROTECTIVE FINISH	DRAWN BY: FRBK	DATE: 2/9/2015	APPROVED BY: DATE:
	FILE NAME: MALE SHAFT ALL LCA 50.idw	PART NAME: MALE SHAFT ALL LCA 50	SCALE: DO NOT SCALE DWG	DWG SIZE: C
CHAMFER 0.03 MAX	SPEC. NUMBER:	PART NUMBER:	REVISION: A	