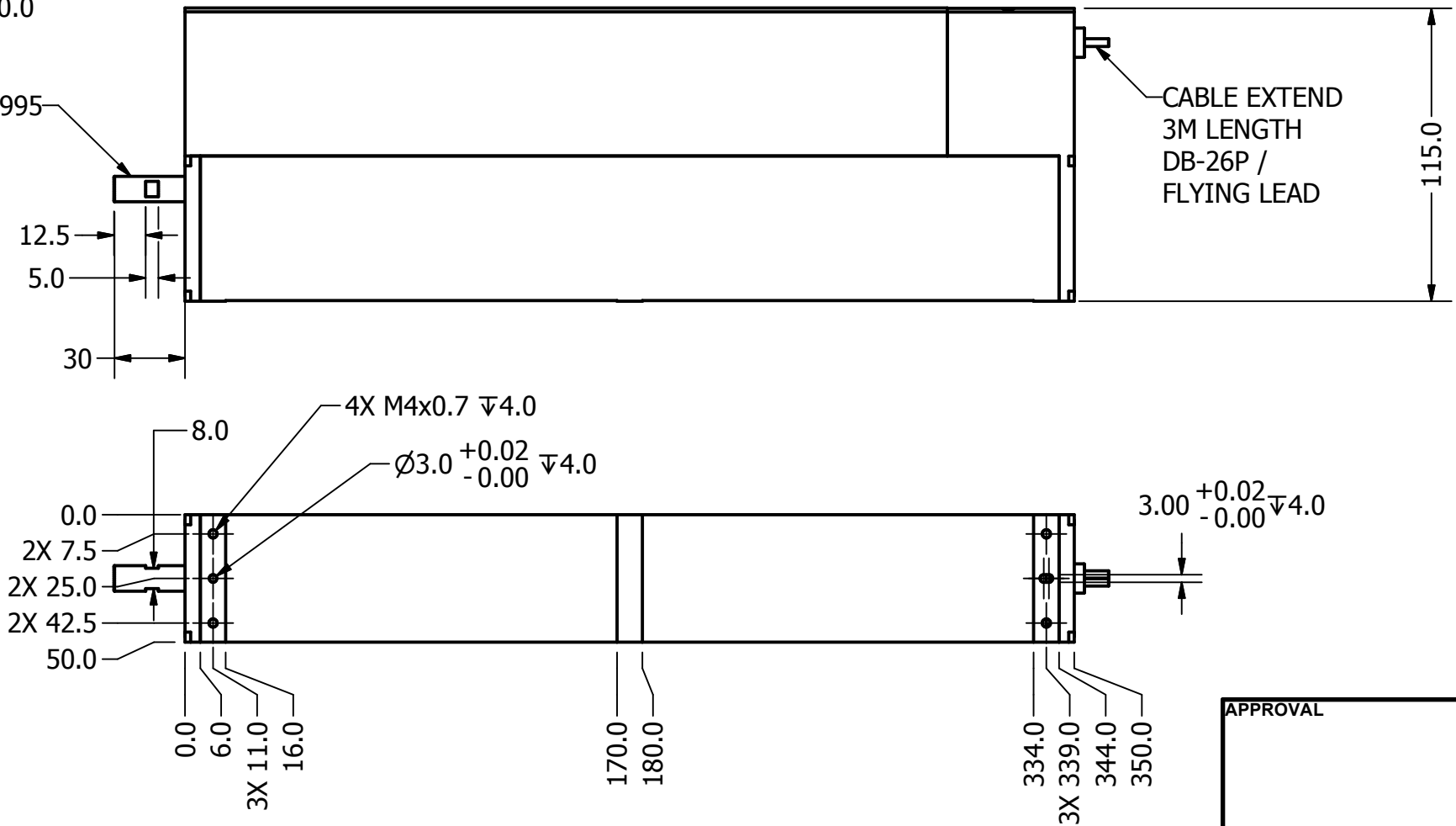
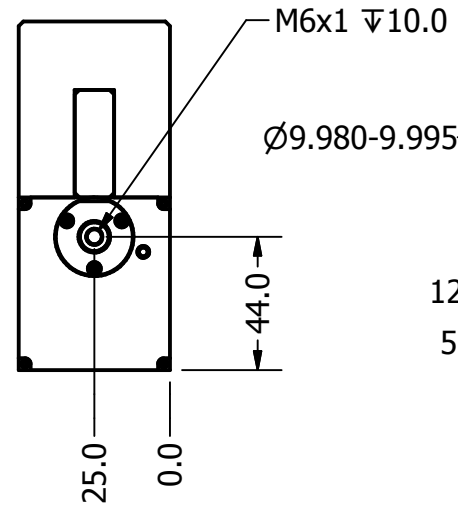


NOTES (UNLESS OTHERWISE SPECIFIED)

1. ALL DIMENSIONS APPLY AFTER PLATING.
2. BREAK ALL SHARP EDGES AND REMOVE BURRS.
3. ALL DIMENSIONS ARE IN mm UNLESS OTHERWISE NOTED.
4. STROKE: 150
5. PEAK FORCE: 100 N @1.7A (48V)
6. FORCE CONSTANT: 66 N/A
7. ENCODER RESOLUTION: 5, 1, 0.1um
8. MAX CURRENT: 1.7A
9. COIL RESISTANCE: 28 OHM
10. MOVING MASS: 0.825KG
11. MASS: 8KG

REVISION HISTORY				
REV	DATE	ECN	DESCRIPTION	APPROVED
A	2/27/2014		RELEASE	ORAMAS



DB-26P	
PIN	FUNCTION
1	PH. A+
2	PH. B+
3	PH. Z+
4	NC
5	NC
6	I/O RTN
7	NC
8	NC
9	NC
10	PH. A-
11	PH. B-
12	PH. Z-
13	NC
14	NC
15	NC
16	NC
17	NC
18	NC
19	+5VDC
20	5V RTN
21	NC
22	COIL U
23	COIL V
24	COIL W
25	NC
26	NC

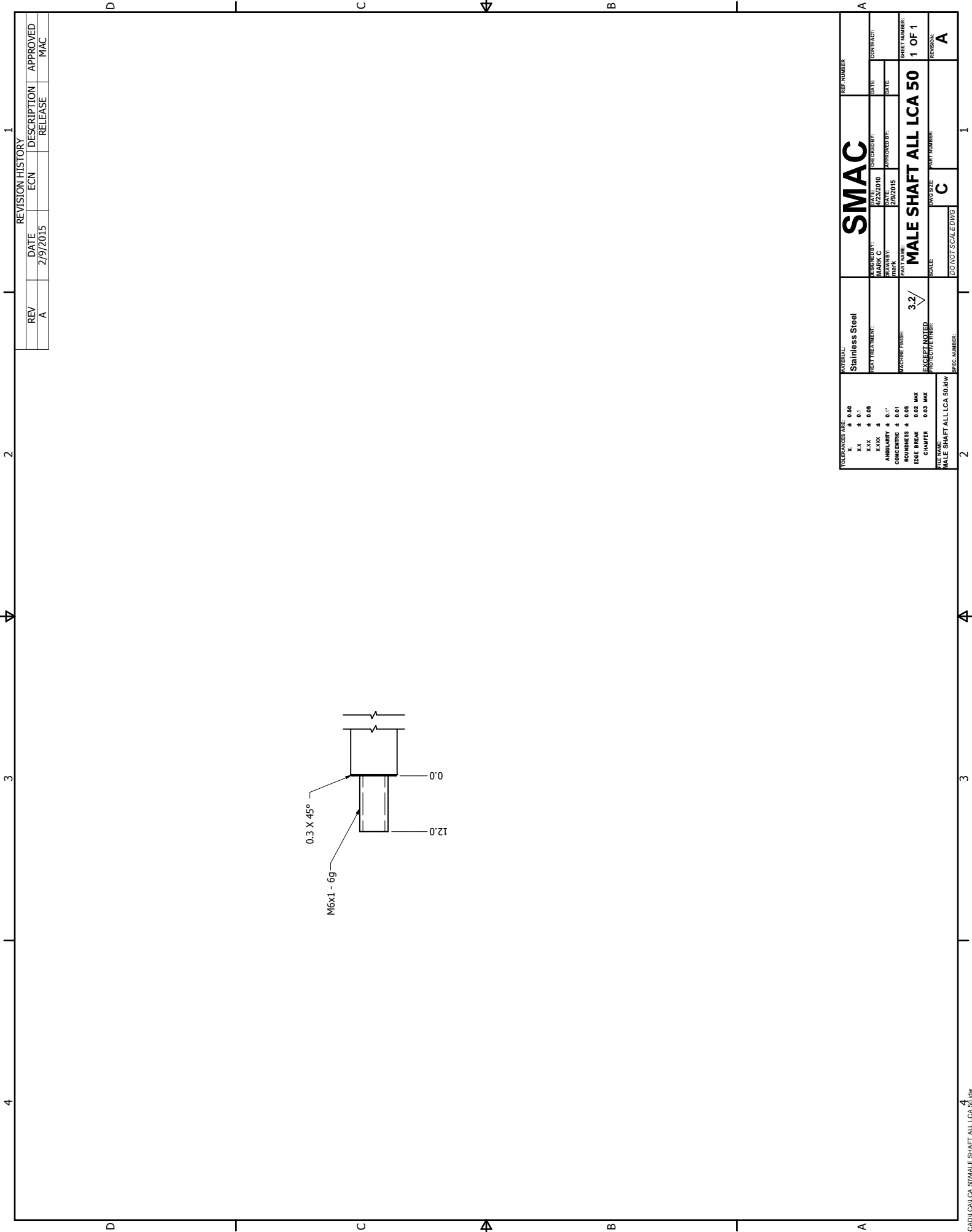
DB-15P	
PIN	FUNCTION
1	PH A+
2	PH Z+
3	PH B+
4	+5V
5	NC
6	NC
7	NC
8	NC
9	PH A-
10	PH Z-
11	PH B-
12	5V RTN
13	NC
14	NC
15	NC

POWER	
PIN	FUNCTION
1	GND
2	+V
3	U
4	V
5	W
6	NC

**SIGNATURE NEEDED FOR ORDER APPROVAL**  
 SIGN: \_\_\_\_\_ DATE: \_\_\_\_\_  
**APPROVAL NOT RECEIVED WITHIN 48 HOURS MAY AFFECT DELIVERY**

APPROVAL

TOLERANCES ARE: X. ± 0.50 X.X ± 0.1 X.XX ± 0.05 X.XXX ± ANGULARITY ± 0.1° CONCENTRIC ± 0.01 ROUNDNESS ± 0.05 EDGE BREAK 0.02 MAX CHAMFER 0.03 MAX	MATERIAL:	<h1 style="text-align: center;">SMAC</h1>		REF. NUMBER	
	LCA 50-150-3			LCA50-150-3	
FILE NAME: LCA 50-150-3.idw	HEAT TREATMENT:	DESIGNED BY: mark	DATE: 4/16/2012	CHECKED BY:	DATE:
	MACHINE FINISH: 3.2/	DRAWN BY: mark	DATE: 4/19/2012	APPROVED BY:	DATE:
EXCEPT NOTED	PART NAME: <b>LCA 50-150-3</b>			SHEET NUMBER: 1 OF 1	
PROTECTIVE FINISH:	SCALE: DO NOT SCALE DWG	DWG SIZE: B	PART NUMBER:	REVISION: A	
SPEC. NUMBER:					



0.3 X 45°  
M6x1 - 6g  
0.0  
12.0

REV	DATE	ECN	DESCRIPTION	APPROVED
A	2/9/2015		RELEASE	MAC

REVISION HISTORY

<b>SMAC</b> MATERIAL: <b>Stainless Steel</b> PART NUMBER: <b>MALE SHAFT ALL LCA 50</b>		REF. NUMBER: A
TOLERANCES ARE: FRACTIONS ± 0.00 DECIMALS ± 0.1 ANGULARITY ± 0.1° ROUNDNESS ± 0.05 EDGE BREAK 0.02 MAX CHAMFER 0.03 MAX UNLESS OTHERWISE SPECIFIED MALE SHAFT ALL LCA 50.i4w	FINISH: 3.2/ EXCEPT NOTED PROTECTIVE FINISH	DATE: 02/20/2015 DATE: 2/9/2015
DRAWN BY: MASON G. CHECKED BY: MASON G. PART NAME: MALE SHAFT ALL LCA 50	DATE: 02/20/2015 DATE: 2/9/2015	CONTRACT: SHEET NUMBER: 1 OF 1 REVISION: A
SCALE: DO NOT SCALE DWG PART NUMBER: C		SHEET NUMBER: 1 OF 1 REVISION: A