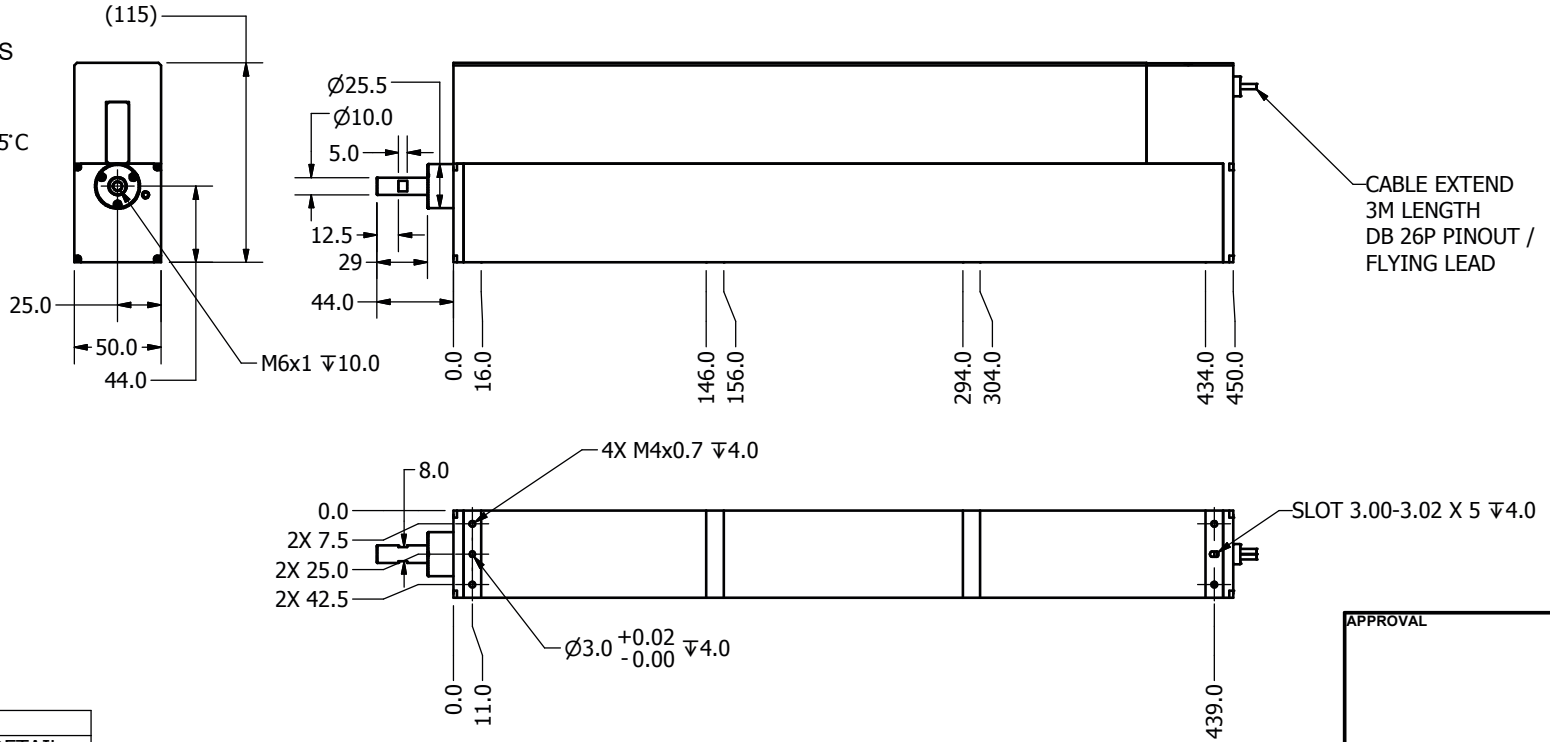


LINEAR SPECIFICATONS:

LINEAR STROKE: +1/-0 mm
 PEAK FORCE: 90 N @1.7A (48V)
 FORCE CONSTANT: 67 N/A
 ENCODER RESOLUTION:5, 1, 0.1µm
 ENCODER REPEATBILITY: ±4 COUNTS
 MOVING MASS: 1 Kg
 TOTAL MASS: 14.0 kg
 OPERATING TEMPERATURE: 0°C TO 65°C
 ALL DIMENSIONS ARE IN mm

REVISION HISTORY				
REV	DATE	ECN	DESCRIPTION	APPROVED
A	8/22/2012		PROTO	MAC



DB 26P PINOUT

PIN No	DETAIL
1	PH. A+
2	PH. B+
3	PH. Z+
4	NC
5	NC
6	I/O RTN
7	NC
8	NC
9	NC

DB-15P

PIN No	DETAIL
10	PH. A-
11	PH. B-
12	PH. Z-
13	NC
14	NC
15	NC
16	NC
17	NC
18	NC

POWER

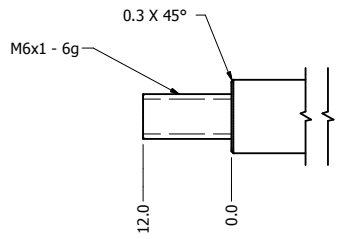
PIN No	DETAIL
19	+5VDC
20	5V RTN
21	NC
22	COIL U
23	COIL V
24	COIL W
25	NC
26	NC

SIGNATURE NEEDED FOR ORDER APPROVAL
 SIGN: _____ DATE: _____
APPROVAL NOT RECEIVED WITHIN 48 HOURS MAY AFFECT DELIVERY

APPROVAL

TOLERANCES ARE: X. ± 0.50 X.X ± 0.1 X.XX ± 0.05 X.XXX ± ANGULARITY ± 0.1° CONCENTRIC ± 0.01 ROUNDNESS ± 0.05 EDGE BREAK 0.02 MAX CHAMFER 0.03 MAX	MATERIAL: HEAT TREATMENT: MACHINE FINISH: EXCEPT NOTED PROTECTIVE FINISH: FILE NAME: LCA50-250.idw	<h1>SMAC</h1>		REF. NUMBER LCA50-250-3
		DESIGNED BY: mark	DATE: 4/9/2012	CHECKED BY: _____
DRAWN BY: mark	DATE: 8/22/2012	APPROVED BY: _____	DATE: _____	
MACHINE FINISH: 3.2/	PART NAME: LCA50-250-3	SHEET NUMBER: 1 OF 1		
SCALE: _____	DWG SIZE: B	PART NUMBER: LCA50-250-3	REVISION: A	
SPEC. NUMBER: _____	DO NOT SCALE DWG			

REVISION HISTORY				
REV	DATE	ECN	DESCRIPTION	APPROVED
A	2/9/2015		RELEASE	MAC



TOLERANCES ARE: X ± 0.50 XX ± 0.1 XXX ± 0.05 XXXX ± ANGULARITY ± 0.1° CONCENTRIC ± 0.01 ROUNDNESS ± 0.05 EDGE BREAK 0.02 MAX CHAMFER 0.03 MAX	MATERIAL: Stainless Steel	SMAC		REF. NUMBER
	HEAT TREATMENT:	DESIGNED BY: MARK C	DATE: 4/23/2010	CHECKED BY: DATE:
	MACHINE FINISH: EXCEPT NOTED PROTECTIVE FINISH	DRAWN BY: FRBK	DATE: 2/9/2015	APPROVED BY: DATE:
	FILE NAME: MALE SHAFT ALL LCA 50.idw	PART NAME: MALE SHAFT ALL LCA 50	SCALE: DO NOT SCALE DWG	DWG SIZE: C
CHAMFER 0.03 MAX	SPEC. NUMBER:	PART NUMBER:	REVISION: A	